



KU International Affairs Overview

January 2019

KU[®]



OUR MISSION

To promote, integrate and support international and global initiatives throughout KU's teaching, research and service efforts by developing and maintaining international partnerships; bringing, supporting, and retaining the world's talent; and connecting our community meaningfully and responsibly with the world.



VISION

Through our transformative work, we will empower and inspire Jayhawks from across all 50 states and the nations of the world to understand and assume their roles as informed and integral members of our global community, roles that necessarily defy geo-political boundaries, facilitate peace through mutual understanding and respect, and collectively uplift society.

Values

As a comprehensive international research institution driven by over 150 years of pioneering commitment and contributions to international education, we pride ourselves in providing all students, faculty and staff with the finest international learning and work environment possible through our programs, services, and strategic collaborations across campus and the world. We are committed to bringing the world to KU and KU to the world.

Strategy



Ensure our students, faculty and staff are increasingly representative of the world's diversity;

Create a context for international and global engagement on campus and support equitable access to in-bound and out-bound opportunities for all community members;

Foster a campus climate of inclusion and equity by supporting every student, faculty member and staff member culturally, linguistically, professionally, and academically throughout their KU experience.

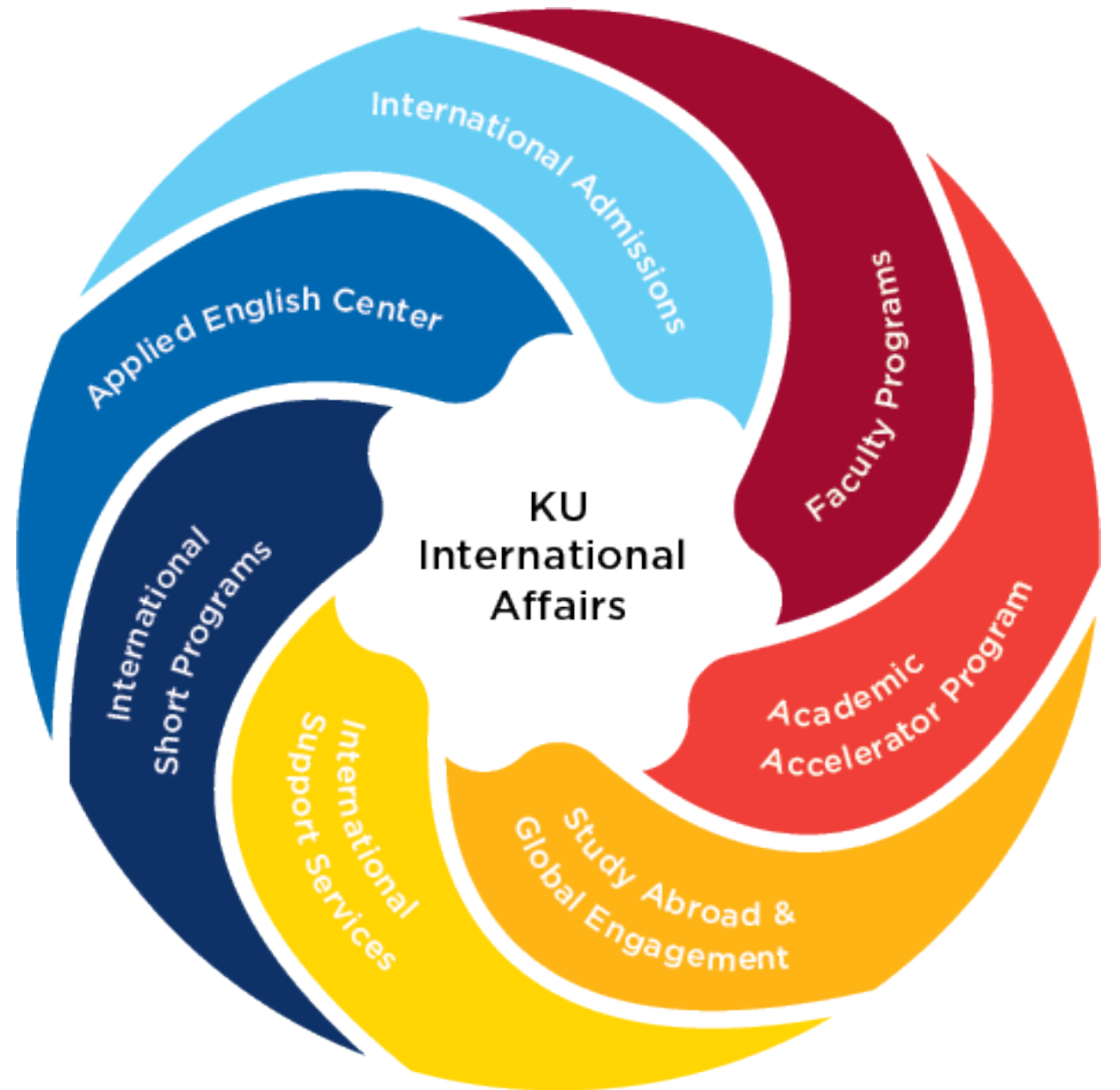


KU INTERNATIONAL AFFAIRS

We stand ready to partner with the campus on the promotion of a comprehensive internationalization agenda.



A Powerful Force



Unit-level changes

Functions | Changes | Locations | Timelines



International Innovation & Initiatives

International Innovation & Initiatives

Applied English Center | International Short-Term Programs | Intercultural Learning & Assessment

*Charged with finding new ways forward
for the division and the university.*

How we're changing

International Short Programs:

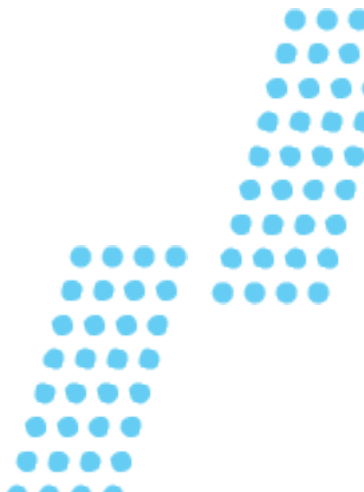
- Will become a separate unit alongside the AEC
- Have a new name: International Short-Term Programs (ISTP)
- Programs may or may not include an AEC-taught English language component
- Programs may be designed and/or procured in collaboration with other departments or offices
- Programs may be jointly managed with other departments or offices
- AEC and STP directors will report to AVP for International Innovation & Initiatives



How we're expanding

Intercultural Learning and Assessment:

- Will report to AVP for Innovation & Initiatives Based in Strong 300 but pan-divisional
- Intercultural competency across KU...
 - Building Intercultural Skills workshops
 - Learning assessment: study abroad, FYE, GAP, others
 - Core goal 4.2 assessment/support for faculty
 - Targeted trainings for KU units



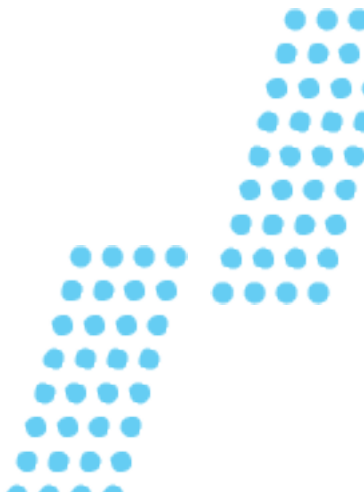


Study Abroad & Global Engagement

How we're changing

The addition of “Global Engagement” to our name better reflects the breadth of constituencies we serve across a broad array of activities, both on campus and abroad. Within this framework, our new functions will include:

- Faculty engagement, education and campus-based internationalization initiatives
- Focused development of graduate education abroad activities to build upon existing portfolio, including incorporation of Graduate Direct Exchange/China Direct Exchange
- Global Awareness Program and Global Scholars



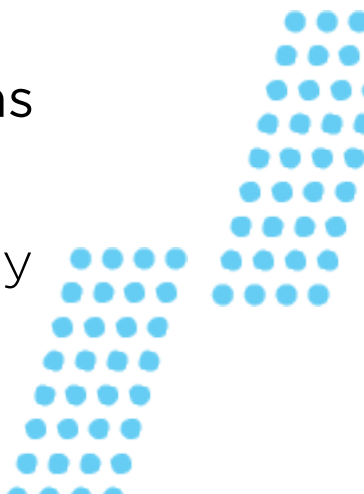
International Admissions



How we're changing

- IA will take over awarding function for scholarships (including exiting and new scholarships)
- Collaboration with Scholarship Coordinator will allow scholarship planning & implementation
- Expansion of communication plan to include full life cycle of students, collaborate with ISS and AEC
- Expand in-country representation & coordinate recruitment contracts (India & China)
- Enhance armchair recruitment efforts with outside company collaborations

These changes allow IA to build on its foundation to better collaborate with partner units, develop enrollment management structures and provide quality service to students from prospect through graduation.

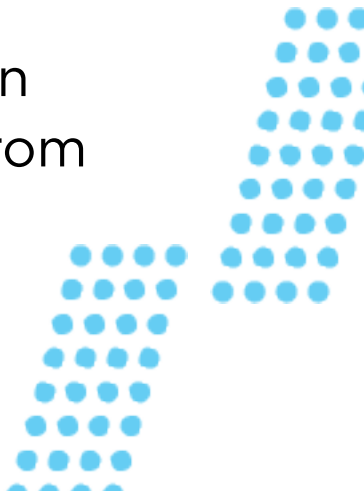


International Support Services



How we're changing

- Our immigration counseling will expand to include international scholars and employees (Keeli Nelson and Shawn Wettlaufer)
- We will also include the Jayhawk Semester and sponsored students along with management of international student scholarships. (Celeste Yaluk and Ashley Rivera)
- Seth Coulter will work across International Admissions and ISS to create an integrated communications plan for the entire life cycle of the student - from inquiry to post graduation.



KU INTERNATIONAL AFFAIRS

INTERNATIONAL AFFAIRS ADMINISTRATION

Dr. Charles Bankart
Strong Hall
Room 300
international.ku.edu

KU International Affairs oversees the comprehensive internationalization efforts of the KU Lawrence campus.

- Strategic Internationalization
- Agreements & partnerships
- International Education policy
- Budget oversight & management
- Data & Reporting
- Public relations
- Delegation & events coordination
- KU Passport Center

INTERNATIONAL ADMISSIONS

Somer Chalfant
Strong Hall
Room 45
world.ku.edu

International Admissions recruits international students to the KU campus and supports them in their transition to KU.

- International Recruitment
- Undergraduate admissions
- Personnel abroad
- Recruitment contracts
- Scholarship awarding
- Credential evaluation
- Credit articulation
- International student communications

INTERNATIONAL SUPPORT SERVICES

Charles Olcese
Strong Hall
Room 2
iss.ku.edu

International Support Services provides immigration services to students, staff, and faculty and keeps KU in compliance with federal immigration regulations.

- Immigration advising
- Programming and orientations for students and scholars
- Sponsored student services
- Jayhawk Semester
- Federal advocacy
- Academic support
- Scholarship coordination

INTERNATIONAL SHORT PROGRAMS

Margaret Coffey
Dr. Joe Potts
isp.ku.edu

The short programs team develops credit bearing, field-specific short courses for visiting international groups.

- Inbound short program & proposal development
- Grant preparation
- Program budgeting & reporting
- Program follow-on activities
- Online curriculum development
- Campus & regional partnerships

APPLIED ENGLISH CENTER

Dr. Valerie Pierce
Dr. Joe Potts
Lippincott Hall
Room 204
aec.ku.edu

The Applied English Center offers students and scholars at all levels of English proficiency language classes to prepare them for study and research at American universities.

- Intensive English
- Academic and Professional English
- On-line ESL and EAP Curricula
- Language pedagogy training
- Edwards Campus programs
- Regional English outreach
- Graduate student preparation

ACADEMIC ACCELERATOR PROGRAM

Dr. Amy Neufeld
Dr. Roberta Pokphanh
Strong Hall
Room 126
accelerator.ku.edu

The Academic Accelerator Program prepares international students for full-time degree programs through advising, programs, & college transition courses.

- Recruitment
- College transition programs
- Support & advising services
- Integration programming
- Academic preparation courses
- Career enhancement

STUDY ABROAD & GLOBAL ENGAGEMENT

Angela Perryman
Lippincott Hall
Room 108
studyabroad.ku.edu

Study Abroad & Global Engagement develops and implements global educational and research experiences for all students and faculty on campus and abroad.

- Program development
- Student advising
- Curriculum integration
- Marketing & outreach
- Scholarship support
- Inbound exchange
- Risk management
- Graduate programs
- Global Awareness Program
- Global Scholars Program
- Faculty Engagement & Support
- International research

INTERNATIONAL FACULTY PROGRAMS

Dr. Megan Greene
Strong Hall 300
Wescoe Hall 3632
international.ku.edu/faculty-categories

The director of faculty programs is your principal liaison to the division of International Affairs and can help connect you to the right people and resources within international affairs.

- Research travel funding
- Grant application assistance
- Teaching resources Awards
- Global Scholars Program

INTERCULTURAL LEARNING & ASSESSMENT

Allison Watkins
Strong Hall 300
international.ku.edu/interculturalllearning

Our team of faculty and staff experts develop unit tailored programs for students, faculty, and staff based on intercultural competency objectives.

- Intercultural Skills Workshops
- Assessment

